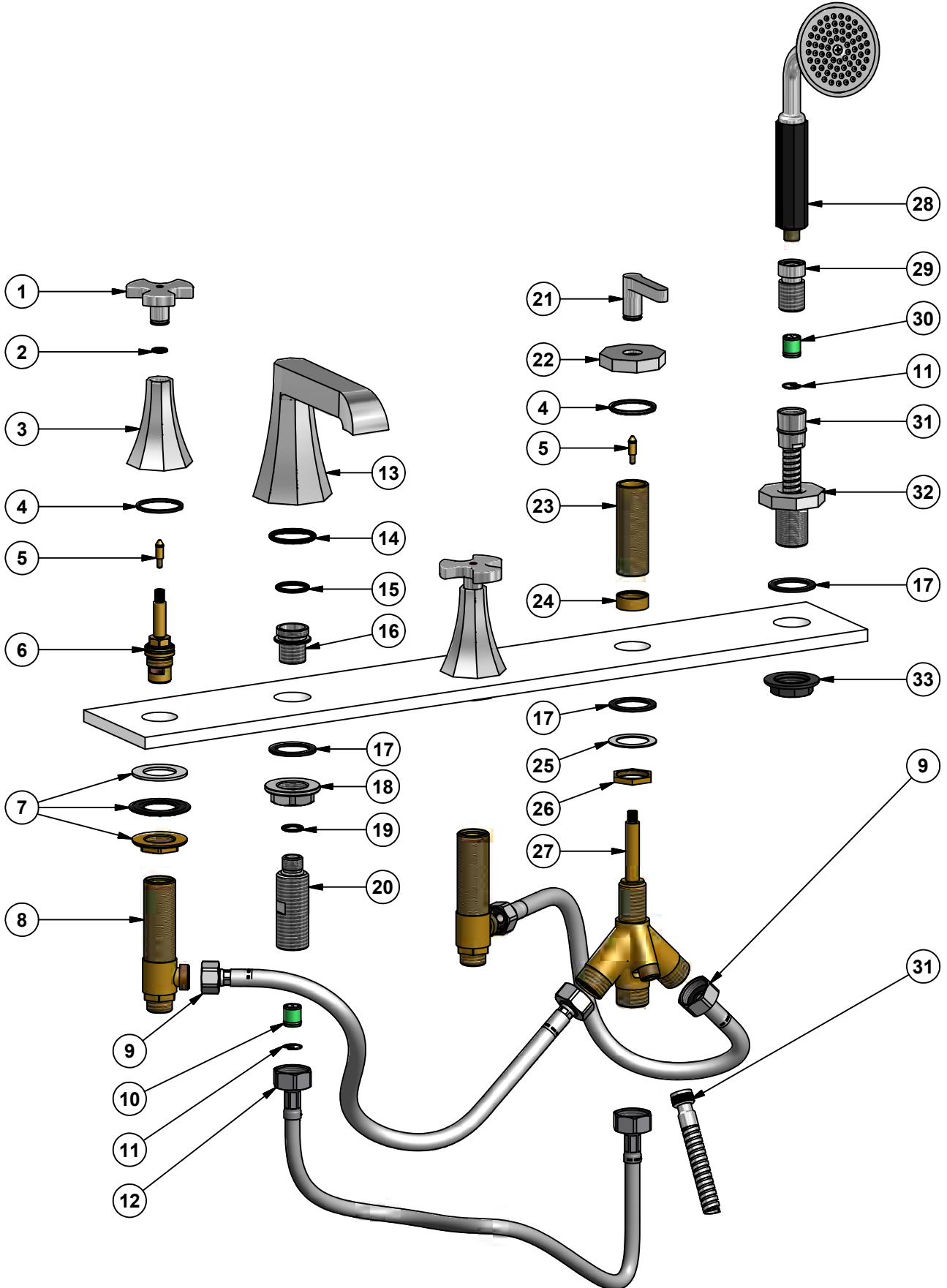
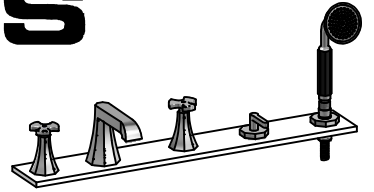


# SVEDBERGS®

S

GB

## 96903 (Krom, Chrome)



<b>Pos.</b>	<b>Ant/Qty</b>	<b>Titel / Title</b>	<b>Art.No.</b>
1	2	Blandarhandtag Belmondo / Mixer handle Belmondo	
2	2	O-ring 9,25x1,78	
3	2	Bas till blandarhandtag / Base for mixer handle	
4	3	Gummipackning 38x33,5x2 / Rubber packing 38x33,5x2	
5	3	"Klick" anslutning / "Click" connection	
6	2	Keramisk tätning / Ceramic cartridge	98875
7	2	Fixeringsset / Fixing set	
8	2	Anslutningskoppling / Connection piece	
9	2	Anslutningsslang G <sup>1/2</sup> / G <sup>3/4</sup> / Connection hose G <sup>1/2</sup> / G <sup>3/4</sup>	98876
10	1	Backventil / Non return valve	
11	2	Låsring för backventil / Locking ring for non return valve	98879 (1)
12	1	Anslutningsslang G <sup>3/4</sup> / Connection hose G <sup>3/4</sup>	98876
13	1	Blandarhus / Mixer body	
14	1	O-ring 32,2x3	
15	1	O-ring 22,23x2,62	
16	1	Anslutning till pip / Connection for body	
17	3	Gummipackning 38x28x2 / Rubber packing 38x28x2	
18	1	Fastsättningsmutter / Fastening nut	
19	1	O-ring 14x1,78	
20	1	Fastsättningskolv / Fixing body	
21	1	Omkastarspak / Diverter handle	
22	1	Bas för omkastare / Base for diverter	
23	1	Anslutningskolv omkastare / Connection piece for diverter	
24	1	Täckmutter / Cover nut	
25	1	Metallring 39x26,5x1 / Washer 39x26,5x1	
26	1	Anslutningsmutter / Connection nut	
27	1	Omkastare / Diverter	
28	1	Duschhandtag Belmondo / Shower handle Belmondo	98879
29	1	Anslutning duschhandtag / Connection for shower handle	98879
30	1	Flödesreglerare Ø15 / Reduction valve Ø15	98879
31	1	Duschslang G <sup>1/2</sup> / G <sup>3/8</sup> L:200 / Shower hose G <sup>1/2</sup> / G <sup>3/8</sup> L:200	98848
32	1	Duschhandtagshållare / Holder for shower handle	
33	1	Låsmutter / Locking nut	